



PS

squares / parking



Karen Blixens plads | Cobe
Zuidboulevard | bureau Bas Smets
Jaarbeursplein | OKRA



ps paisea #11



evaluation | guillermo monfort / josé ml. vidal

In the current context of the need to reduce greenhouse gas emissions caused by motorised traffic in our cities, it is necessary to reduce travel by private motor vehicles, which is why the use of alternative means of transport, such as bicycles, electric vehicles and public transport, is being explored. In order to encourage and promote the use of these types of transportation, appropriate parking spaces should be provided for them within cities in the vicinity of the hubs of urban activities of all kinds: commercial, cultural, train and bus stations, airports, etc.

Therefore, we have thought it worthwhile to present three different approaches in three central European cities that seek to address this issue and, through their designs, promote the use of bicycles in particular. At present, urban centres are striving to be more appealing and convenient for pedestrians, attempting to recover public space for their enjoyment by focusing on public transport and cycling. One need that has arisen is the secure parking of bicycles and cars, in the closest proximity to the destination and which do not create obstacles on pedestrian routes in cities.

The **first project** is located on the campus of a Danish university, where cycling is very popular. Space on the campus was taken up by a large number of bicycles, with the consequent problems caused by the storage of these in the urban setting and in the accessibility of adjacent spaces. What has been achieved here is to provide a place for bike parking, semi-concealed and protected at the same time, generating a new topography in the public area, which makes the space at ground level more inviting for pedestrians and more secure and protected for the storage of bicycles, separating these spaces in order to personalise them and minimise their impact.

The **second project** seeks to make underground parking for cars compatible with planting trees and creating spaces for public enjoyment. It achieves this by reclaiming and incorporating the space for parking into the pedestrian and landscaped areas, creating two nuclei of public access and introducing trees, thereby doubling the amount of public space. The design of the roof of the car park, which includes the installation of an interactive water feature with jets, as well as a grassy area and trees, together with the new library, the old town and the raised landscaped platform of the shopping centre, form a new complex of public spaces and facilities for the city of Waregem.

The **final project** manages to achieve the parking of cars beneath the square and the storage of bicycles under the large access staircase to the railway station. The objective of the intervention has been to create a welcoming human scale in an XL environment, diverting traffic and providing public meeting places such as the grand staircase, the atrium, the water podium and the rows of informal seating, while incorporating vegetation into the landscape. The result is a dynamic meeting place where people can explore, shop, live, work and relax in the centre of Utrecht.

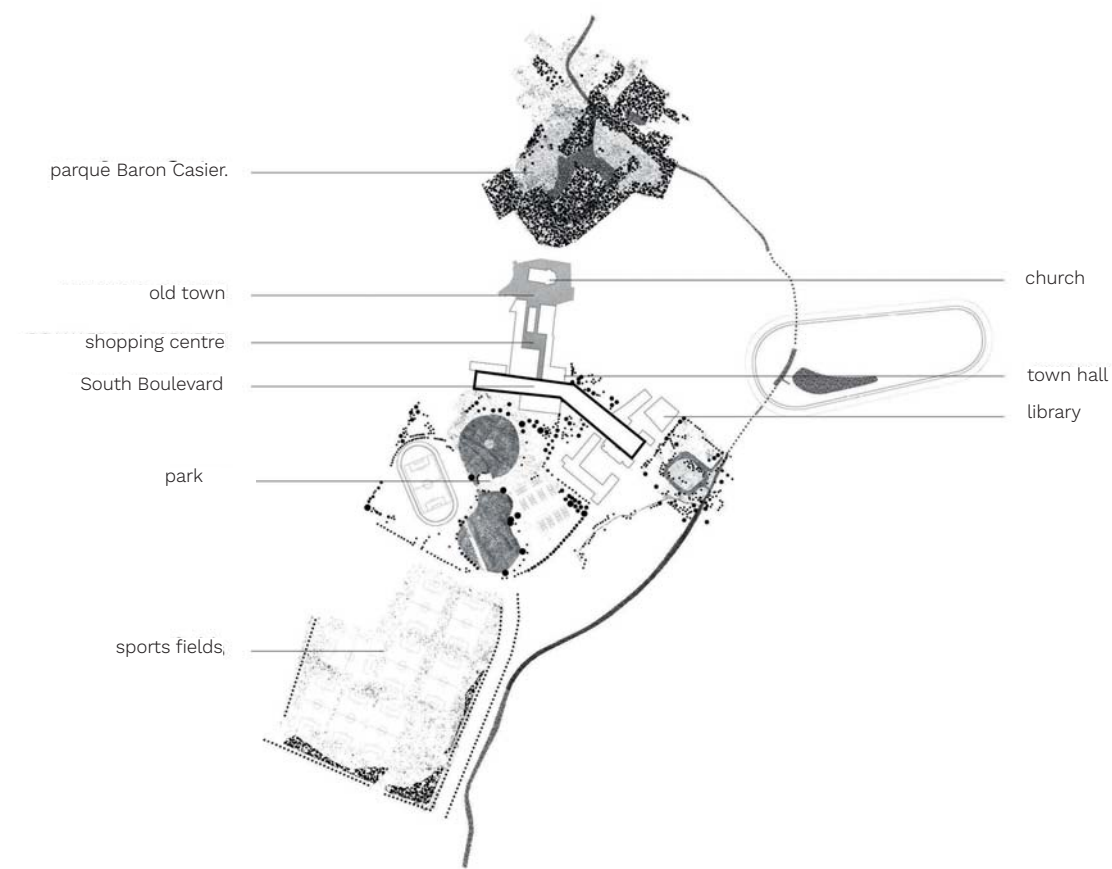


2

Zuidboulevard
Waregem | Belgium
bureau Bas Smets



Sketch of the location of South Boulevard.

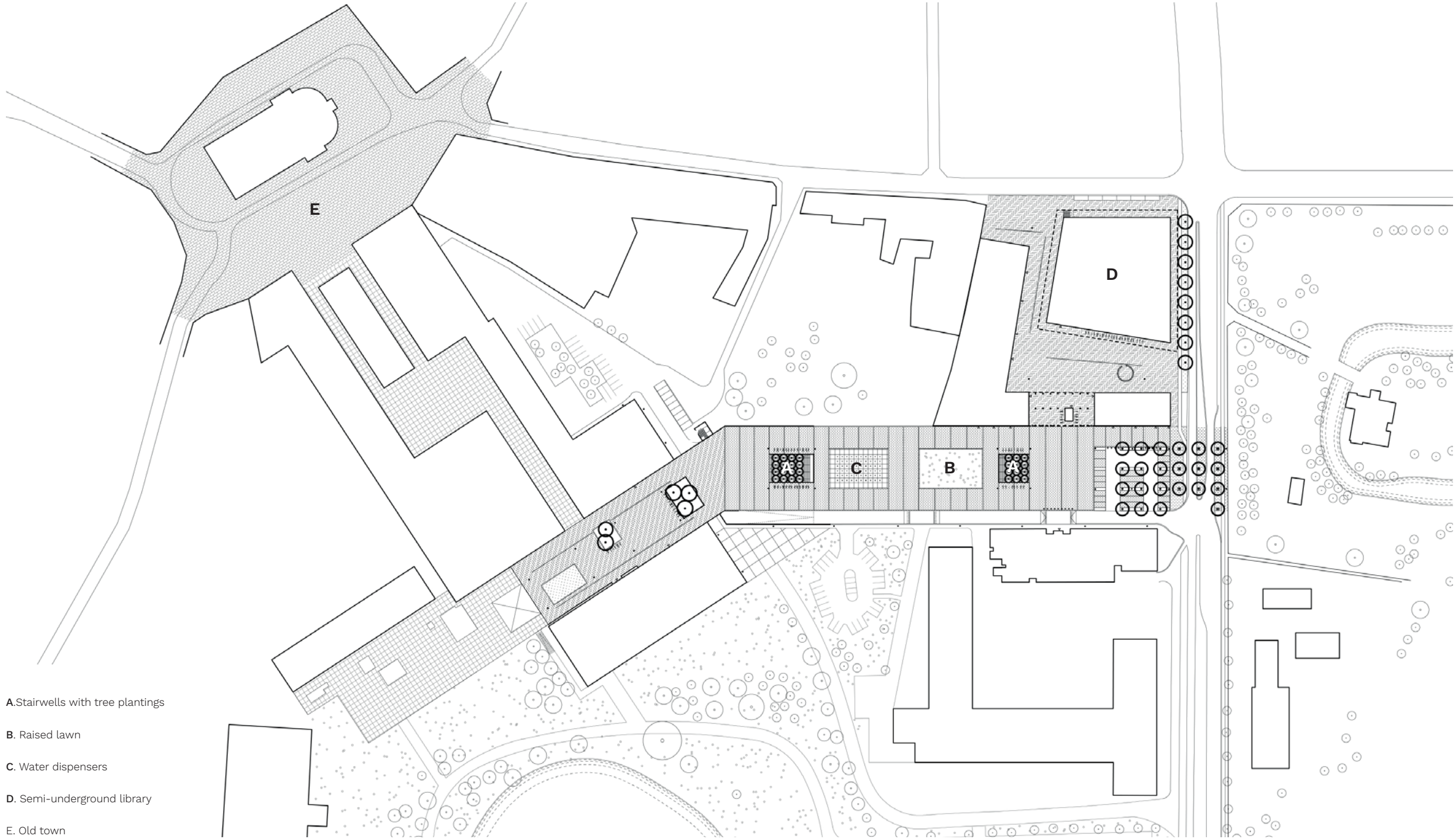


Aerial view of the area highlighting the green roof of the Library.

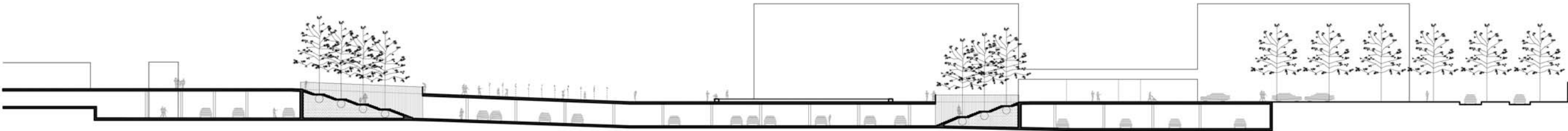
introduction

The historic city centre of Waregem was expanded in the 1960s with the construction of a commercial centre. It was built as an elevated pedestrian platform on top of a large car park. Staircases and elevators provided access to the car park located at the ground level, while a number of openings were planted with trees. The platform ended abruptly at a stairwell, in anticipation of the next phase.

Fifty years later, the ‘Zuidboulevard’ project completes this unfinished modernist design. A gently sloped esplanade reconnects the elevated pedestrian platform with the ground floor, where a new library has been built. Beneath this slope, a new parking level has been constructed. Two generous staircases have been planted with large trees and provide easy access to the car park. These openings guarantee natural ventilation, allowing zenithal light to enter and offering a clear point of orientation in the car park. The two staircases face each other in order to create a scenic promenade through the car park, as if the public space of the boulevard has been melded into the parking level.



- A. Stairwells with tree plantings
- B. Raised lawn
- C. Water dispensers
- D. Semi-underground library
- E. Old town



The two stairwells face each other to create a panoramic walkway through the car park, as if the public space on the boulevard flows into the parking level.





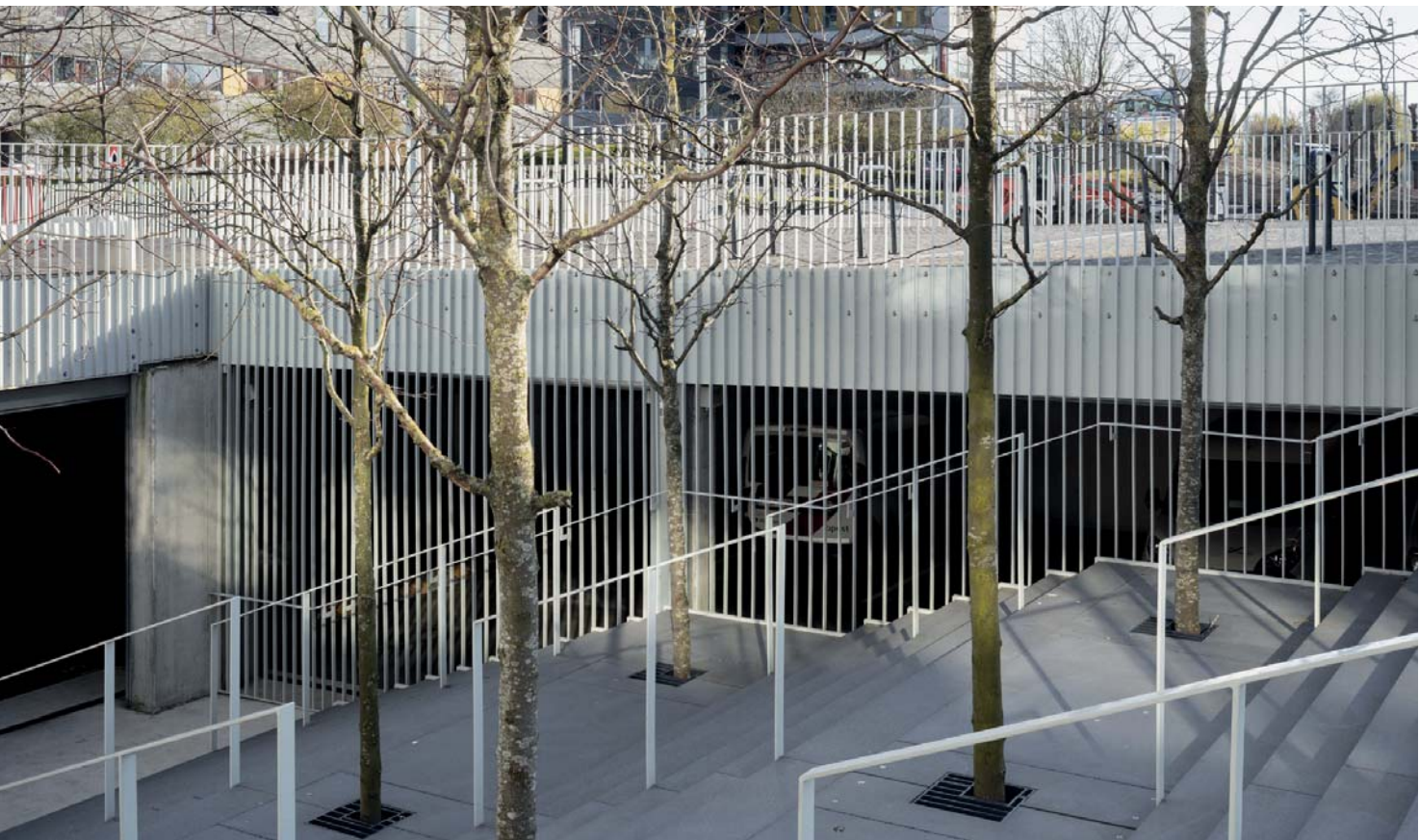
The trees are planted in the unusable volume of the stairwells, which act as giant planters. This allows the roof structure to be kept as light as possible. Two playful elements have been added on the roof: a raised rectangular lawn area bordered by a bench seat; and sixty water jets, integrated within the slim roof structure, with the water flowing down the slope. This water element has become a popular attraction for kids in summertime. Tall lighting poles illuminate the boulevard, which is made from bricks typical of the clay soil of the region.

Together with the historic centre around the church and the elevated platform of the commercial centre, the design of the Zuidboulevard and its new library creates a true triptych of public spaces and functions for the city of Waregem.

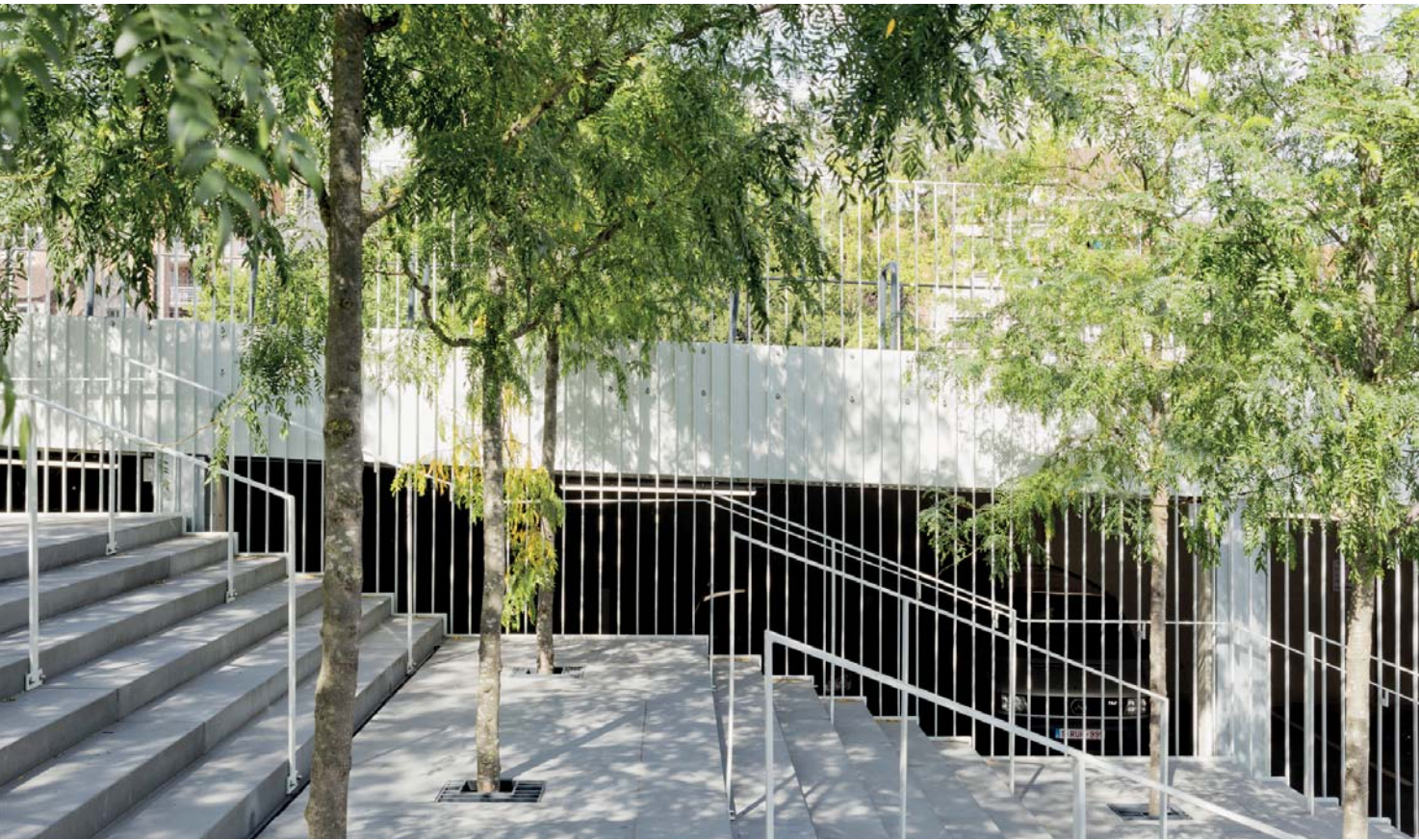
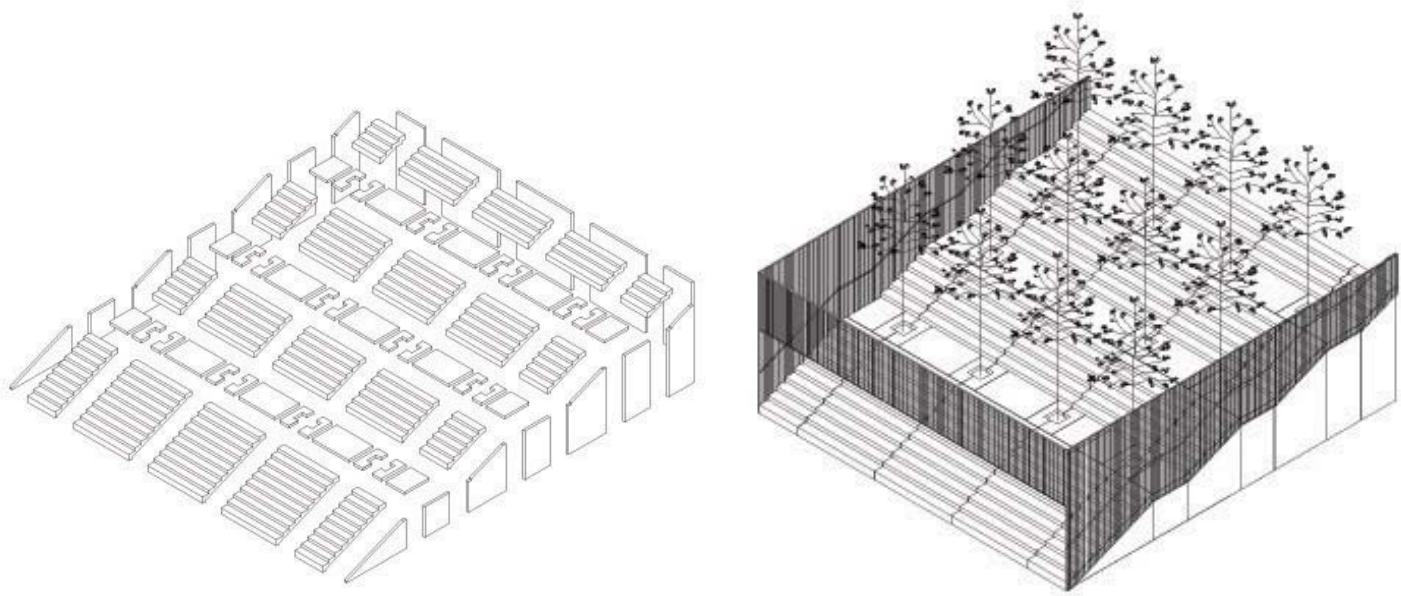
View of one of the stairwells in winter.



View of one of the stairwells in winter.



Axonometry drawing of stairwell.



View of one of the stairwells in summer.







technical data

project	ZUIDBOULEVARD
location	Waregem Bélgica
clients	Ciudad de Waregem
authors	Bureau Bas Smets
collaborators	Bas Smets, Philip Stessens, Basil Descheemaeker, Pascaline Lannoo, Simona Nikova
collaborating companies	contratista principal: Artes Depret nv subcontratista trabajos vegetales: Arbowar nv subcontratista del agua: Aquafontal bvba subcontratista hgón prefabricado: Urbastyle bvba subcontratista trabajos en metal: Starkey Metaalwerken bvba
collaborating firms	arquitectos edificio Biblioteca: Robbrecht & Daem bvba arquitectos parking y edificios de apartamentos: Goedefroo + Goedefroo bvba Sewerage Engineering office + technical design + follow-up implementación: Studiebureau Demey bvba oficina de ingeniería parking: VK Engineering nv
date of project	2010-2013
construction date	2013-2017
surface area	1,9 ha
cost	3.000.000 €
photography	Michiel De Cleene, Filip Dujardin



ps paisea | staff

ISSN 2659-9724

publisher	paisea non-profit assotiation		
editing	Mar Añó	Juanjo Cubí	Julia Dobón
	Mariola Fortuño	Victor G. Segarra	Olga Lanzas
	Irene Soriano	Fernando Usó	José Manuel Vidal
persons in charge #11	José Manuel Vidal Juanjo Cubí / Mar Añó		
advisory board	Noel Van Dooren landscape architect		
	Martí Franch landscape architect		
	Kristina Hill degree in ecology		
	Cristina Tullio landscape architect		
	Gustavo Marina agricultural technicaal engineer		
	Paola Sangalli agricultural technicaal engineer		
issue design	Kike Correcher		
preparation and loyaut	Javi Valiente José Ml Vidal		
translation	Neil Larsen		
web / RRSS	Julia Dobón		
advertising	general @paisea.com		
editorial	info@paisea.com		
distribution	free download at www.paisea.com		