



# WE CAN CHANGE THE WEATHER

100 cases of changeability

Editor **Marleen Wynants**

**crosstalks**

**VUBPRESS**

## Territorial Connection

### Back to where the river flows

#### Bas Smets (Bureau Bas Smets)

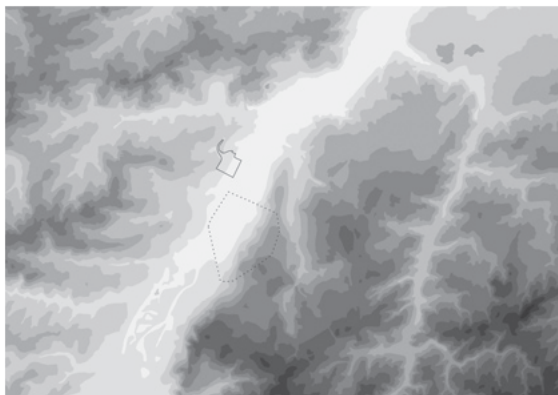
BE

Cities are defined by the way they interact with their territory. This interaction is never a coincidence, but always a human intervention, first conceived then constructed. Paris is defined by the passage of the Seine and its axes reveal the topography of the valley. Venice is built on a lagoon and even the skyscrapers of New York are a direct response to its geographic condition of a peninsula surrounded by water. By burying its river, Brussels has lost this territorial connection. The reconversion of the 45 hectare industrial site of Tour & Taxis offers the opportunity to reveal this lost valley and to anchor the site in its territory. The project for the outdoor space uses the valley structures to qualify the exterior space as a major public park.

| 1 | Brussels is marked by the valley of the river Senne. This river is never apparent as it was canalised underground. The site of Tour & Taxis lies on the border of this valley.

| 2 | The green spaces are fragmented and scattered. They are not related to the valley structure.

| 3 | The project for Tour & Taxis offers the opportunity to create a new park on the scale of the territory.



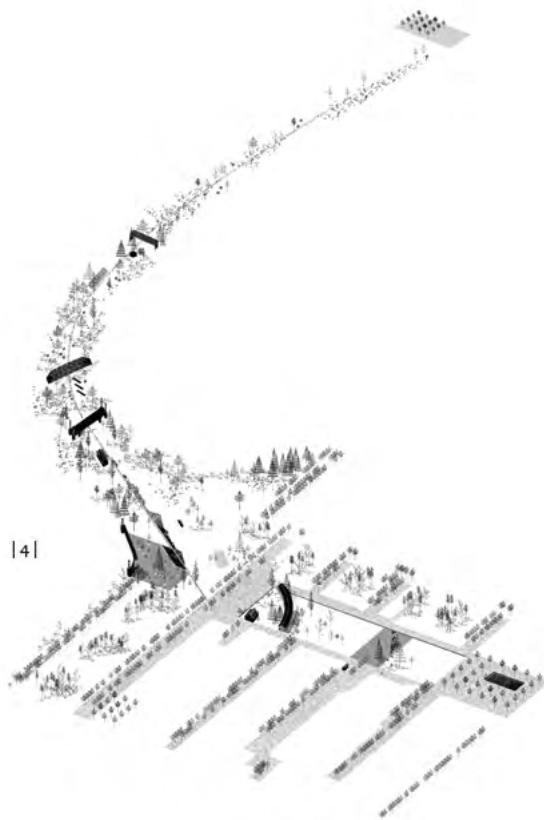
| 1 |



| 2 |



| 3 |



| 4 | Introduction of the valley structures of the river Senne to qualify the exterior space of the industrial reversion as a public park.

| 5 | View of the entrance to the park. The trees announce the passage of the river and create a view on the adjacent North Quarter.

Bas Smets is specialised in the conception of landscape strategies and the realisation of public space. His office counts 12 architects and landscape architects and is currently working on 30 projects in seven countries. These projects include the new public park around the Estonian National Museum in Tartu, the public space of the reversion of the Tour & Taxis industrial site in the center of Brussels and the urban development of the Paris La Chapelle International site in collaboration with l'AUC. In 2009 he was selected for the master plan of the Parc des Ateliers in Arles, where Frank Gehry will build a cultural utopia.

Bas Smets obtained his Masters degree in Architecture and Civil Engineering at the University of Louvain and a postgraduate degree in Advanced Landscape Studies at the University of Geneva.

↳ [www.bassmets.be](http://www.bassmets.be)

| 5 |

